



EXHIBIT KK 2.3

**KOBUS DEMEYER
ROELOFSE**

DIAGRAMS



**JUDICIAL COMMISSION OF INQUIRY INTO ALLEGATIONS OF STATE CAPTURE,
CORRUPTION AND FRAUD IN THE PUBLIC SECTOR INCLUDING ORGANS OF STATE**

2nd floor, Hillside House
17 Empire Road,
Parktown
Johannesburg
2193

Tel: (010) 214 to 0651

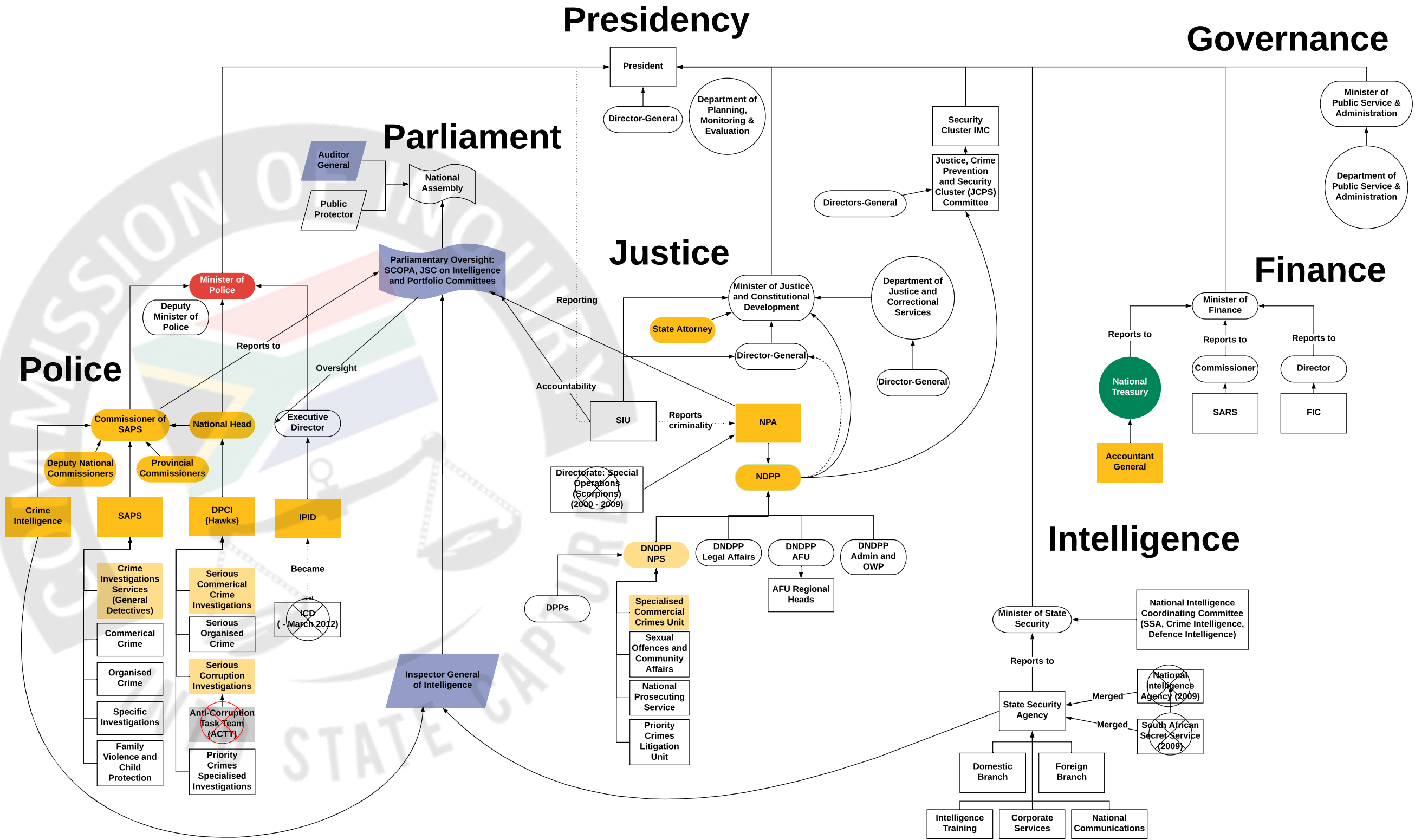
Email: inquiries@sastatecapture.org.za

Website: www.sastatecapture.org.za

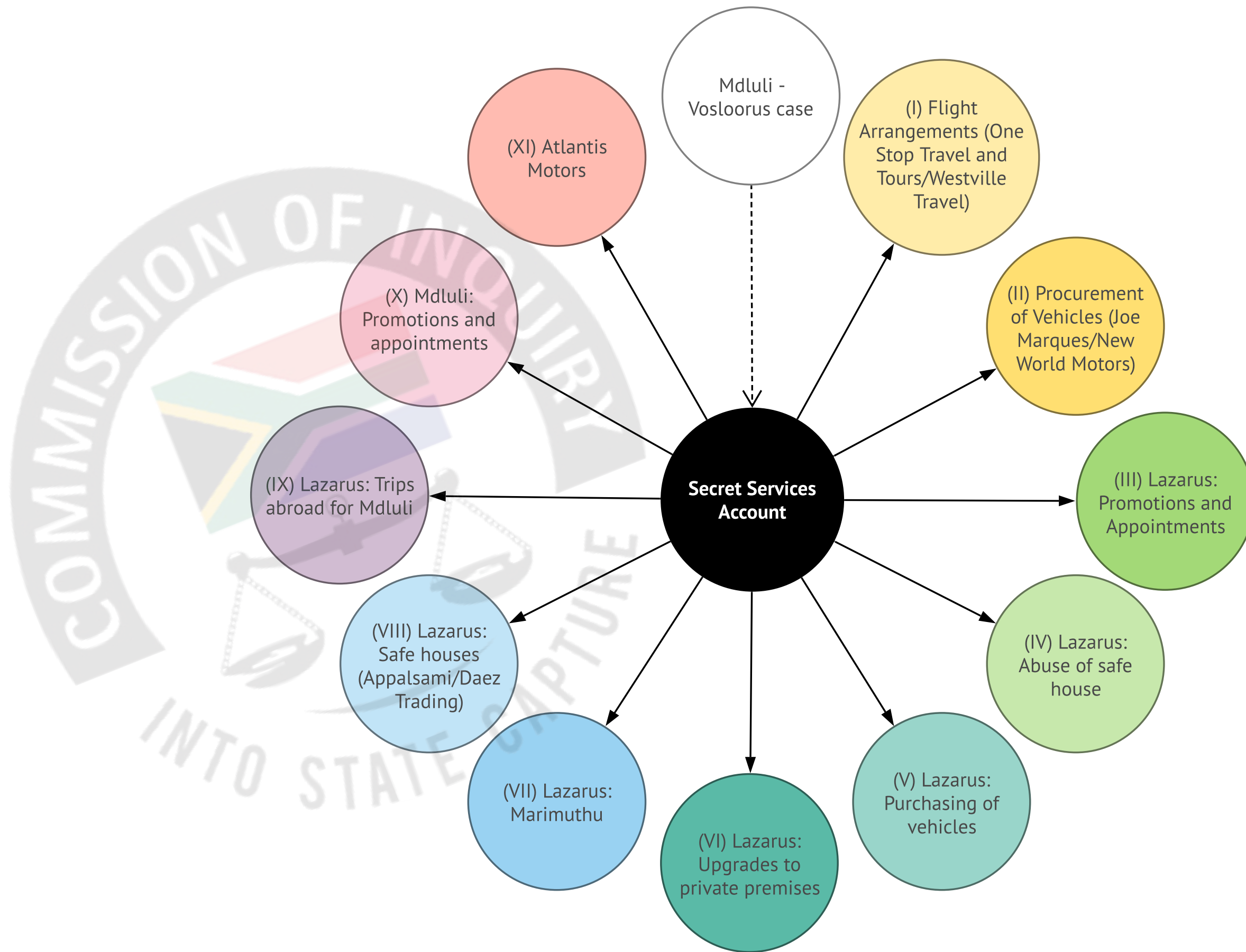
INDEX: EXHIBIT KK 2.3

#	Description	Pages
1.	Overview: Law Enforcement Functional Representation	01
2.	The Investigations	02
3.	The Timeline	03 to 04
4.	Status of the Investigations as at 17.09.2019	05
5.	SSA Outcomes / Obstructing Investigations	06

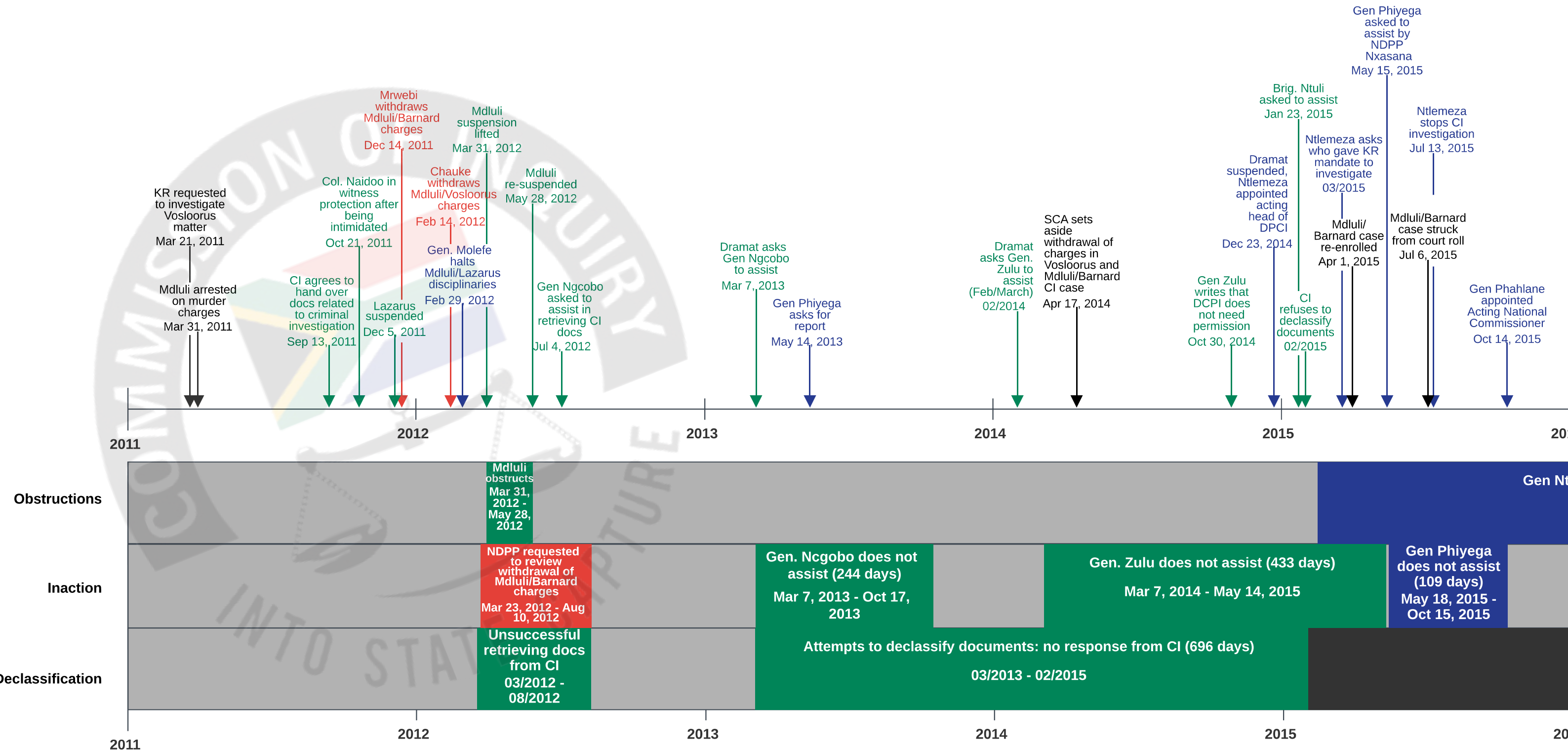
Overview: Law Enforcement Functional Representation



The Investigations



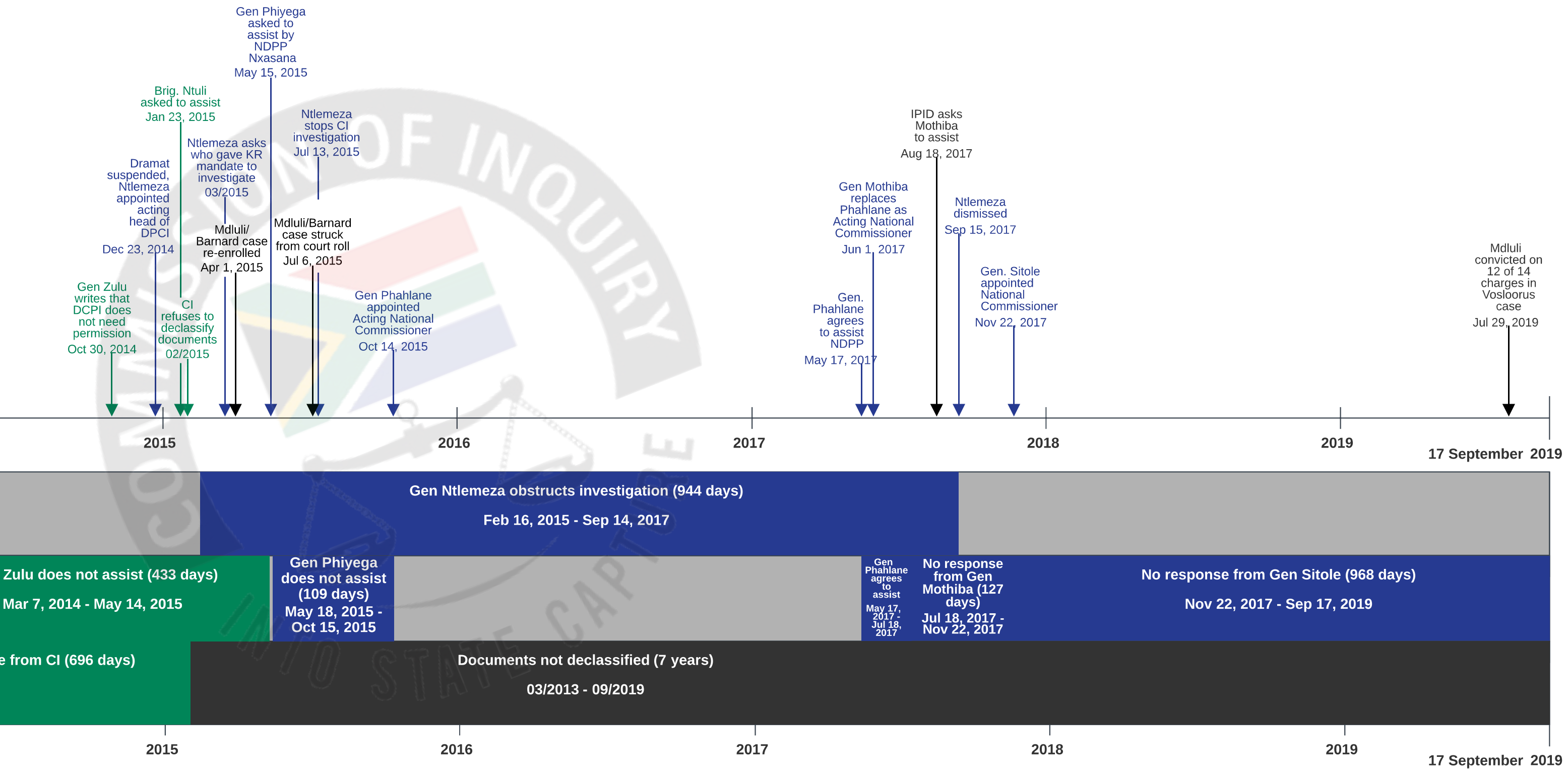
Timeline



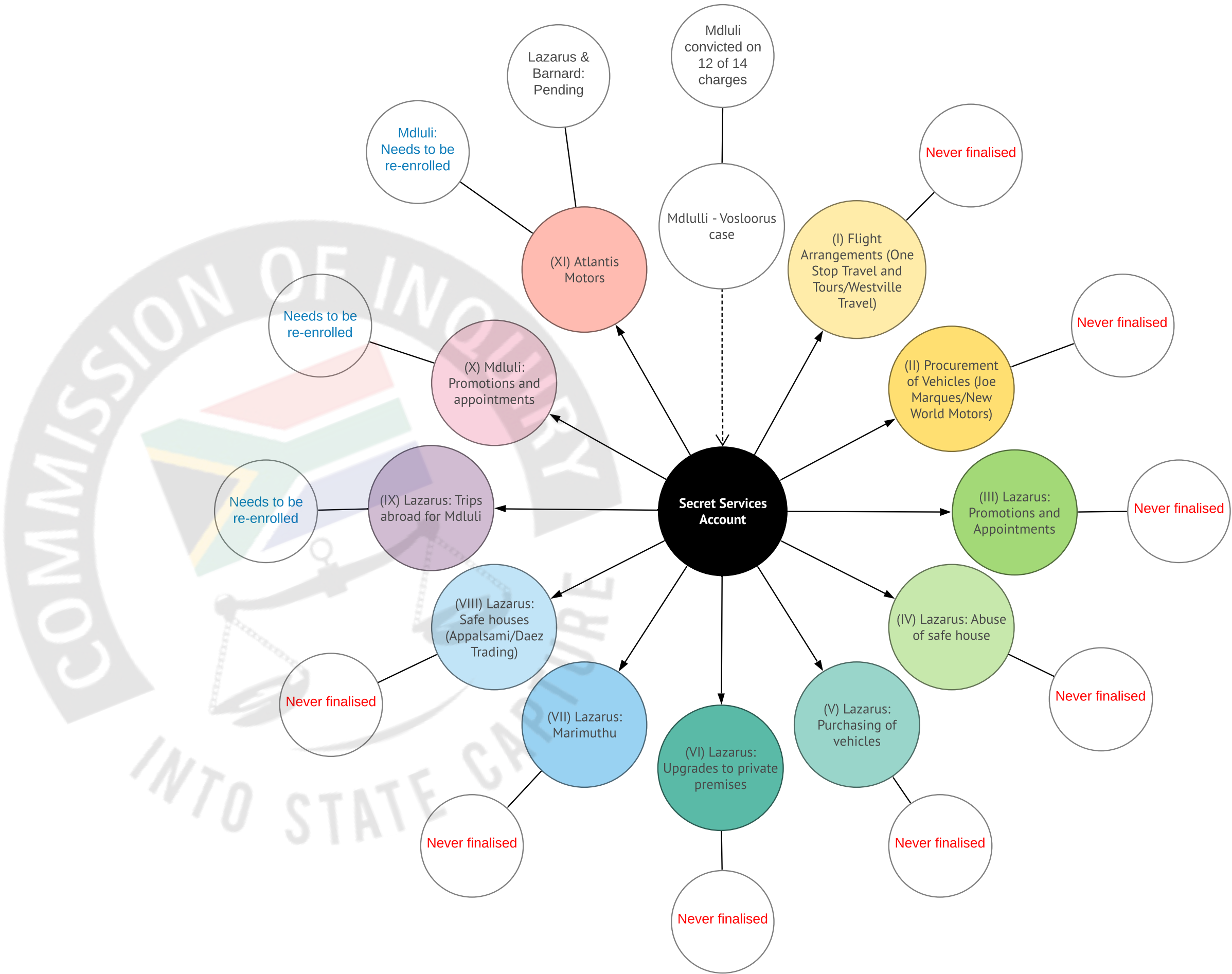
Crime Intelligence

SAPS

NPA



Status of the Investigations as at 17.09.2019



SSA: Procurement &/ Appointments &/ Benefits	Both	Obstructing Investigations: Action/Inaction	
<div>Leo Haese BMW</div> <div>Minister Nathi Mthethwa</div> <div>John Appalsami [Daez Trading]</div> <div>Gen. B Cele</div> <div>Joe Marques [New World Motors]</div> <div>Gen. M Nchwe</div> <div>Mahesh Parekh [One Stop/Westville]</div> <div>Col. N Ximba</div> <div>LLVS Trading Services</div> <div>Col. NP Mdlalose</div> <div>Hills Fitment Centre</div> <div>Lt. Col. DG Naidoo</div> <div>African Dream Church</div> <div>Maj. Gen. HS Mashudu</div> <div>Panaganath Marimuthu</div> <div>Maj. Gen. VS Matshatshe</div> <div>Jan Venter [Atlantis Motors]</div> <div>Col. V Malaza</div> <div>CL Dicks</div> <div>Vusiwane Mdluli</div> <div>Ranjeni Munusami</div> <div>Theresa Lyons</div>	<div>Lt. Gen. RN Mdluli</div> <div>Maj. Gen. S Lazarus</div> <div>Col. HJ Barnard</div> <div>Col. NH Singh</div> <div>FM07</div> <div>FM08</div> <div>FM09</div> <div>FM10</div>	<div>Cecil Burgess</div> <div>Gen. MB Ntlemeza</div> <div>Gen. M Mphego</div> <div>Lt. Gen. KJ Sithole</div> <div>Maj. Gen. C Ngcobo</div> <div>Lt. Gen. LJ Mothiba</div> <div>Lt. Gen. B Zulu</div> <div>Lt. Gen. JK Phahlane</div> <div>Lt. Gen. J Molefe</div> <div>Maj. Gen. D Mnonopi</div> <div>Gen. R Phiyega</div> <div>Brig. MA Ntuli</div> <div>Adv. L Mrwebi</div> <div>Adv. N Jiba</div>	

Civilian

SAPS

NPA

Crime Intelligence

Cabinet

JSCI